

STATEMENT OF QUALIFICATIONS



Demolition Specialty Services



2011: Celebrating 100 + Years of Service!

TABLE OF CONTENTS

- 1: Introduction
- 2: Services
- 3: Safety
- 4: Team
- 5: Experience
- 6: References



HEADQUARTERS

628 E. Edna Place, Covina, CA 91723
P / 626.967.9799 * F / 626.967.1479

BRANCH OFFICES

Oakland, CA
510.568.2626

Houston, TX
281.930.9994

Cincinnati, OH
513.921.1160

Ft Washington, PA
215.367.2500

www.clevelandwrecking.com

1 Introduction



1 Introduction

Founded in 1910, Cleveland Wrecking Company has been long recognized as one of the leaders in the fields of demolition, dismantling, decommissioning, salvage recovery, and related work. Respected as a “turn-key” demolition contractor, Cleveland Wrecking Company has successfully performed over 120,000 major projects, removing over 90,000 structures to prepare project sites for future reuse. We pride ourselves on pioneering many of the methodologies held as industry standards today, and strive to improve procedures and practices on a continuous basis.

In 1997, Cleveland Wrecking Company joined forces with one of our nation’s largest and most-respected environmental organizations, the Dames & Moore Group. In 1999, the acquisition was completed by joining forces with the URS Corporation. Our bonding and insurance capabilities now surpass the limits of many of our competitors and Cleveland Wrecking Company now offers the technical resources of over 30,000 professionals in over 250 cities both nationally and internationally.

Our new family increases our value-engineered approaches to many of our projects. Now more than ever Cleveland Wrecking Company can approach projects in a “cradle to grave” manner, providing all services from permitting to abatement, decontamination to advanced remediation, and structure removal to eventual construction. We can perform multifaceted projects in a streamlined manner, under one contract, using one company.

To further set us apart from our competition, Cleveland Wrecking Company has adopted a behavioral-based safety program, designed to ensure that our team is working in the most safety-conscious manner. We believe that a safe work environment should not be reserved for our “industrial clients” only, but should permeate our culture and become a standard for all projects.



CWC has pioneered many of the industry standards still used today.



Celebrating 100 Years!

Having founded its “Coast to Coast” operations in 1910, CWC is the oldest Demolition Contractor in the United States.

2 Services



2 Services

Cleveland Wrecking Company has 100 years of experience in the demolition industry. From the most difficult removal in congested urban settings, to dismantling entire complexes and industrial plants, Cleveland Wrecking Company continues to build on a tradition of superior engineering backed by the most comprehensive insurance and sophisticated technical expertise available.

We use innovative demolition methods and specialized equipment designed to help get the job done safer, faster, cleaner and more economically. We give our clients a well planned, comprehensive and expeditious demolition project. We also carefully deal with safety and environmental matters during planning and execution of our plans and procedures.

Cleveland Wrecking Company controls its own work force, owns much of its own equipment, and performs project tasks with minimal use of subcontractors. We create value on each project by matching our resources to our client's needs.

COMPLETE DEMOLITION / IMPLOSION

Cleveland Wrecking Company has utilized the power of implosion to quickly and accurately bring down large projects for decades. Implosion is a demolition technique which utilizes the scientific placement and controlled sequential detonation of explosives to collapse structures in on themselves.



BUSINESS LINE EXPERTISE

- Power
- Chemical / Pharmaceutical
- Oil and Gas
- Pipeline
- Mining
- Industrial Manufacturing
- Facilities
- Aviation
- Industrial Wastewater
- Transit and Railroad
- Federal Programs

The implosion of the ASARCO Towers, 2009.

Project was performed under strict EPA involvement. All generated debris was placed in a Corrective Action Management Unit landfill (CAMU).

SELECTIVE DEMOLITION

Cleveland Wrecking Company also undertakes a large amount of partial or selective demolition work to renovate and modernize older buildings and facilities. Interior gut-out projects, seismic retrofit, structural strengthening and modernization projects on existing structures are a major portion of our business. In recent years, Cleveland Wrecking Company has handled several high-profile selective structural and seismic strengthening projects, many in congested urban areas and/or in active, "live" facilities.

We regularly perform selective removal work within historic public buildings, high rise structures, public institutions, shopping centers and other facilities. We handle much of this work as subcontractor to many of the nation's leading General Contractors.



Cleveland Wrecking Company understands the need for careful scheduling, coordination and planning to make these intricate and labor-burdened projects successful.

INDUSTRIAL AND PETROCHEMICAL WORK

A significant portion of our work involves the dismantling of industrial sites and facilities. Cleveland Wrecking Company has many decades of experience working in Petrochemical and Industrial plants, having performed complete dismantlement, delicate selective operations, and plant closures.

Cleveland Wrecking Company has removed complete oil refineries, chemical plants, factories, smelters, paper mills, power houses and generating stations throughout North and South America. We have worked within operating plants under critical conditions and tight schedules with success.

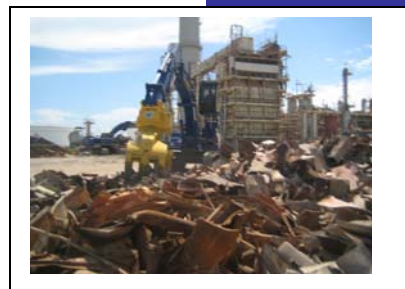
Our clients include many of the nation's largest industrial companies, manufacturers, and utilities. In addition, we have handled the demolition of power houses, generating plants and other utility facilities for many of the country's leading companies.

LEED-Certified Contractor

BBS-Trained Workforce

State-of-the-Art Equipment

MSA's with many of the
Fortune 500



SALVAGE, RECYCLING AND INVESTMENT RECOVERY

Our business philosophy has always been very closely tied to the salvage, scrap and recycling aspects of our projects. Now more than ever, these aspects of a project have important implications on the cost and environmental concerns related to demolition and dismantling work.

We look carefully at the salvage and recoverable elements within each Cleveland Wrecking Company project, and use the potential recovery and recycling values to offset the costs of our work to provide our clients with maximum recovery value. In many cases, salvage value can offset a major portion of the costs of the work.

Our network of equipment buyers and salvage markets also provide our clients with the maximum investment recovery and salvage allowances for any of the reusable components and recoverables. We carefully consider all of these aspects when evaluating our projects to provide the most advantageous bid and "investment recovery" opportunities.

As a "Green Contractor", Cleveland Wrecking Company is extremely dedicated to the recycling and minimization of our waste streams. We are leaders in recycling and reuse of by-products and materials resulting from our demolition operations. We regularly process crushed aggregate from concrete, and recycle wood, steel and other components where this makes sense.



CWC has the experience and expertise to understand the value of your assets, and how to get the top dollar. **Our typical sales of scrap materials exceed \$15M per year.**

We sell materials to local vendors, directly to Mills, or ship materials overseas by selling directly to end users. Some local vendors will drastically underpay in non-competitive areas. We have access to specialized loading equipment that allows us to load 20 tons into a sea container in under 25 minutes per load.

ASBESTOS AND HAZARDOUS WASTE

Our organization has the capabilities to handle most toxic and environmental issues related to dismantling and demolition projects. We have a wide range of experience in the removal, handling, and disposal of various contaminants, including asbestos, lead, PCBs, and other universal wastes.

The coordinated contracting skills of Cleveland Wrecking Company provides a "turn-key" approach for a wide range of environmental services, which can be coordinated with our demolition and other site work.

Our Work Plans are designed to integrate asbestos abatement, lead abatement, and other hazardous considerations into efficient project scheduling. Our ability to control and properly sequence all facets of this work is a result of a great deal of experience in work of this nature. We have our own specialists in various areas of this work, and where appropriate, we use qualified waste haulers and specialty subcontractors to supplement our in-house capabilities.

Cleveland Wrecking Company is experienced in asbestos removal under a full range of applications and conditions. We are familiar with asbestos applications of all types in buildings, industrial plants, and factories. Whether your project involves sprayed-on materials, pipe insulation, acoustical plasters, or other varied asbestos containing materials, we are confident of our abilities to perform all tasks safely, expeditiously, and in a cost-effective manner.

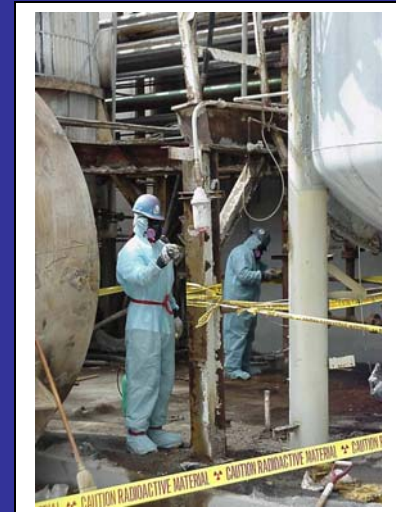
COMPREHENSIVE "TURN-KEY" SKILLS

Combining all of our skills and disciplines into a single source, efficient solutions to complex projects is a hallmark of Cleveland Wrecking Company operations.

We believe in providing our clients with an efficient and manageable approach to "all inclusive" projects that involve demolition, salvage, and environmental matters. A turn-key operation provides our client with an integrated approach to their project, combining the synergy of the demolition, asbestos abatement and other skills, into a single package. An efficient, coordinated approach to multifaceted projects will allow maximum productivity, cost control and schedule compression.

A proven, full-service contractor, such as Cleveland Wrecking Company can properly plan for and provide the full range of abilities and disciplines to complete the most complex of projects. We have the practical experience and resources to lay out and schedule our projects in a responsible, efficient and comprehensive fashion.

Another major benefit of a "turn-key" approach is to **limit liabilities** posed by having multiple parties working on the same site. This risk mitigation is provided by having one source ultimately responsible for all aspects of the project.



Filtrol Poppies NORM
Decontamination Project, 2005

CRADLE-TO-GRAVE SERVICES

- Permitting
- Abatement
- Universal Waste Removal
- Decommissioning
- Demolition
- Excavation
- Soil Remediation
- Grading
- Crushing
- Asset Recovery

SCHEDULING / PROJECT PLANNING

Complete coordination of all aspects of the project by a single organization can provide overwhelming benefits. The most obvious advantage of retaining a "single source" for project tasks is scheduling. By planning project work efficiently, overall project scheduling milestones can be maximized.

As an organization with the ability to undertake all means and methods of demolition work, we feel well qualified to develop Work Plans offering the best compromise between schedule, safety and budget considerations. Because of the breadth of our experience we are not captives to any single approach or methodology. We are competent and well experienced in all aspects of decommissioning and dismantlement.



Cleveland Wrecking Company carefully considers all aspects of the building or facility to be demolished, as well as the surrounding site conditions and environmental considerations, when determining our procedures and

approach. All plans and project schedules are developed with close interaction between all parties involved, including the Owners, General Contractors and Consultants, as applicable.

Computer scheduling using programs such as Suretrak, Microsoft Project, Primavera P3 and other tracking tools are also a part of our resources. We can provide "critical path scheduling" for the entire project, with designated milestones for the major portions of work. Schedules are updated regularly to be responsive to real-time situations on the project.

BONDING AND INSURANCE

Cleveland Wrecking Company feels that providing the highest quality bonding and insurance is an important factor to be considered when selecting a contractor.

As a member of the URS Corporation, Cleveland Wrecking Company is part of a multi-layered, highly sophisticated, corporate-wide insurance and bonding program, providing more than \$250 Million bonding capacity and meeting the insurance needs of the most stringent contracts.

RESOURCES

CWC stays abreast of current software programs and hardware systems utilized in our industry. To date the following systems are in place:

- HCSS – Bid Estimating, Project Management Software
- MAS 90 – Accounting
- SureTrak, Primavera, Microsoft Project – Scheduling

CWC has worked with its broker, Willis, for more than a decade, and provides superior bonding and insurance limits.

3 Safety



3 Safety

Every Cleveland Wrecking Company project, large or small, is engineered for safety, both for the work force and for the general public. Project planning and safety engineering must be backed up by a well-trained and safety conscious workforce.

Cleveland Wrecking Company's management has stressed that training and safety issues are to receive the highest priority. Corporate policy dictates that safe operations shall always take precedence over cost and expediency issues.

As projects and regulations have evolved over the last several years, Cleveland Wrecking Company has come to realize that even the best safety programs can easily grow stagnate. It is a constant effort to keep complacency towards safety out of the workforce. To increase our effectiveness and ensure that safety is not just a practice, but a culture, Cleveland Wrecking Company has adopted a Behavioral -Based Safety Program (BBS) to empower our staff and embed safe work practices into everything we do.



Safety is PRIORITY ONE for each and every CWC project.

In 2008, CWC personnel were recognized for outstanding safety performance on the extremely hazardous Duke Energy Nuclear Station site, having performed more than 50,000 man-hours without incident.

BEHAVIOR BASED SAFETY

BBS is a process that provides a higher level of safety excellence by promoting proactive responses, building ownership, and developing opportunities which relate to employee safety. A primary concept is that most accidents are due to unsafe behavior, and behavior changes may be made that significantly reduce accident risk.

Safe behaviors include following health and safety plans, using work practices that minimize risk, coaching others on safe behavior, and having safety as a priority over speed and convenience.

Cleveland Wrecking Company recognizes that in order for BBS to work, each employee must hold safety in the highest value. Employees feel responsible for the safety of their coworkers as well as themselves.

BBS-Trained Workforce

3-YEAR TRIR
2010 – 0.00
2009 – 1.10
2008 – 0.00

At Cleveland Wrecking Company, we provide clearly defined safety expectations and enforce consequences for observed at-risk behavior. Most importantly, through employee observations and checklists, we provide positive feedback for safe behavior as well as intervene when observing at-risk behavior. We work as a Team in all aspects of our projects - safety being the highest priority.

TRAINING

Cleveland Wrecking Company has a well-established training program and detailed safety manual. Our Corporate Health & Safety team remains current on regulations and requirements and continually updates our Corporate Health & Safety Manual to reflect compliance. Copies of our Injury and Illness Prevention Plan, as well as our Hazardous Communications Program, are available for review upon request.

To be effective, the written program must be backed up with a comprehensive training and follow-up program. We must work constantly to ensure that our employees meet the standards of these manuals. This is achieved by an ongoing training program and close oversight of all operations.

To ensure that the employees are educated with the very best safety awareness, our company has prepared a list of necessary training areas that allow the most efficient safety knowledge:

- The procedure for new hires is to enter a course in General Industry Safety Training, highlighted with demolition safety. This course allows employees to learn what is required by law, and what is expected of them by the company.
- New hires are placed with a knowledgeable foreman and a team of experienced personnel. These workers will be given close supervision in their initial days of employment. New hires are scrutinized closely for their work habits, knowledge, attentiveness and ability.
- As each employee is ready to graduate into new areas of work or skills, additional specialized training and/or apprenticeship is continued.
- Employees are required to attend “refresher courses” annually regarding general and specialized safety practices. Additional topics covered include a review of potential safety violations and current rule changes. This type of training keeps all employees aware of work place hazards, and up-to-date with the latest state-of-the-art safety education.

CWC Field Staff is continually refreshed in the following:

- HAZWOPER
- First-Aid / CPR
- Lead Awareness and Supervisor
- Asbestos Abatement Worker and Supervisor
- Respirator Training
- Defensive Driving
- BBS
- Confined Space Training
- Excavation Competent Person
- Heavy Equipment Competent Person

Field Crews receive **daily training** on tasks to be encountered.

- In addition, during the course of the year, all employees are frequently updated with safety topics through handouts, literature, special seminars, weekly tailgate meetings, and site-specific safety training. This provides the employees with a continuous opportunity to update their knowledge of safe work practices.

Employees are encouraged to submit suggestions and participate actively in the ongoing Training and Safety programs. Depending on the type of work being undertaken, we also avail ourselves to local training programs and specialties.

SITE-SPECIFIC HEALTH & SAFETY PLANS

Each project, though sometimes similar in nature, will bring its own unique tasks and safety considerations. Prior to commencing work on a site, Cleveland Wrecking Company holds an in-house Pre-Job Meeting to review all aspects of the project. Based on the means and methods, Cleveland Wrecking Company prepares a Site-Specific Health and Safety Plan outlining specific concerns and procedures to be followed by all project employees and subcontractors. Copies of the plan are made available to all individuals on site.

EMR / OSHA 300 LOGS

As a member of the URS Corporation, Cleveland Wrecking Company must undergo internal Health & Safety audits by our Corporate Safety Team. These audits help to ensure that Cleveland Wrecking Company is current in the promotion and practice of safe industry standards. Accidents are of grave concern to owners and contractors alike. Our current records demonstrate our commitment to safety, to our clients and to our employees.

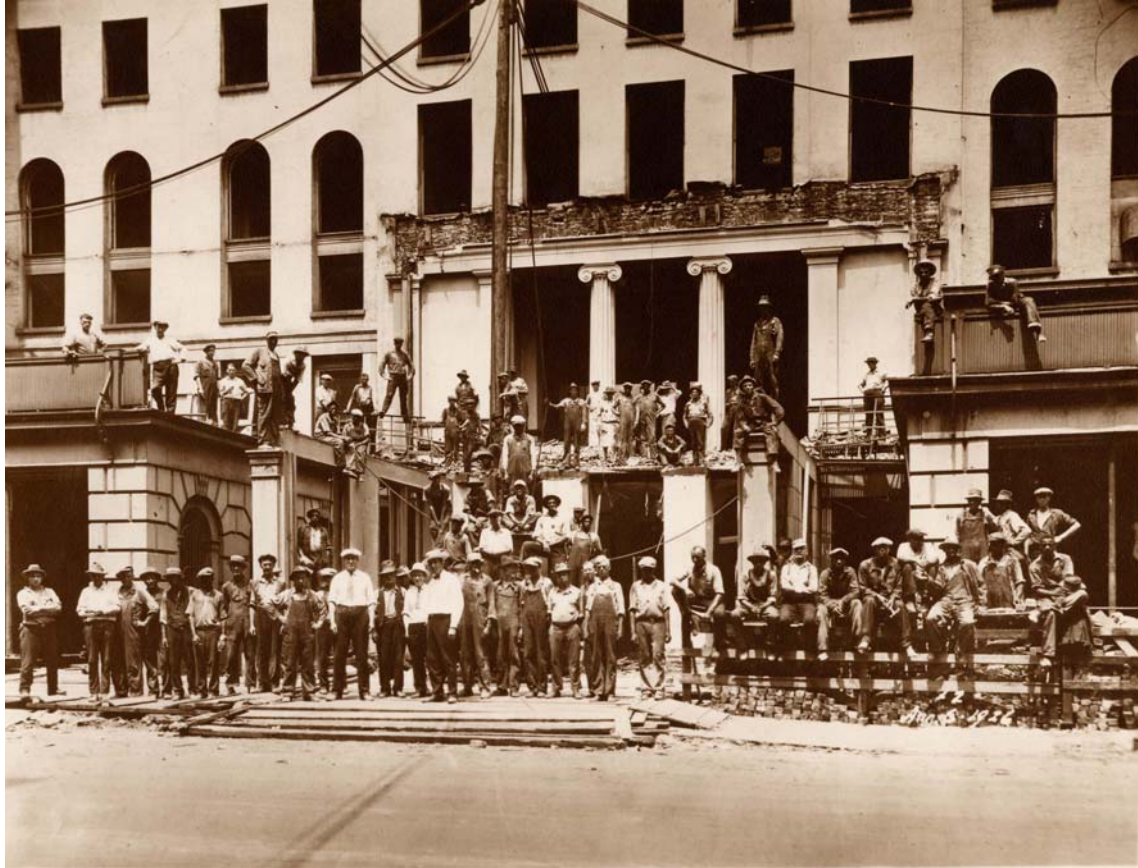
2010 EMR: 0.53

2009 EMR: 0.65

2008 EMR: 0.65

All CWC Subcontractors must be first Prequalified and pass a rigorous safety screening process prior to working on any CWC project.

4 Personnel



4 Personnel

Cleveland Wrecking Company is comprised of professional estimators, project managers, construction managers/superintendents and technical support staff experienced in all facets of industrial demolition, environmental remediation and construction management. Cleveland Wrecking Company promotes its commitment to quality work and client service by placing at the head of each of our project teams an experienced senior staff member who manages the Team's efforts and works closely with the client. Safety is our priority one. Every member of our team is not only trained in our Behavior-Based Safety Program, but team member experience is matched to client need. It is the technical expertise and management skills of our senior managers, as well as our proactive safety culture that distinguishes Cleveland Wrecking Company from other demolition contractors.

The following Matrix represents some of our key personnel who have worked with Cleveland Wrecking Company for numerous years. Each of our employees holds as a top priority our clients' concerns and requirements for successful project completion.



State-of-the-art Equipment is only part of the equation to a successful project.

CWC mans each piece of equipment with certified and CWC-trained operators who follow specific CWC methodologies.

As safety and production are of primary concern, CWC has learned that these capabilities are not easily pulled from outside sources. CWC takes the time to carefully plan each project ensuring that the proper equipment, the **qualified operator** and the **best-suited project manager** are all made available to ensure the project is completed on-time, on-budget and using the highest safety standards.



CWC'S EQUATION FOR SUCCESS

High Quality Equipment + Experienced Personnel = Increased Productivity, Reduced Man-hours and Limited Exposure to Liabilities.

Cleveland Wrecking Company Key Personnel Matrix 2011

Key Employee	Title	Years of Experience	Behavior-Based Safety Trained	TWIC Certified	Demolition	Dismantlement	Implosion	Live Facility	Interior Gut-Out	Seismic Retrofit	Universal Waste Handling and Disposal	Equipment Decontamination	Soil / Water Remediation	Federal, Public Agency	Crushing	Asset Recovery and Salvage	Grading and Excavation	Permitting	High-Rise, Multi-Story Demolition	Urban Settings	Stadiums	Power Sector	Refineries	Chemical	Pharmaceutical	Industrial Plants and Facilities	Remote Locations	Marine, Ports and Wharfs	Highway and Bridges	Hospital	Mining Industry	Schools	Aviation	UXO	
Jim Sheridan	President	35+			x	x	x	x	x	x	x	x	x	x	x	x	x	x	x	x	x	x	x	x	x	x	x	x	x	x	x	x	x	x	x
Doug Cool	Director, Operations	25+	x		x	x	x	x	x	x	x	x	x	x	x	x	x	x	x	x	x	x	x	x	x	x	x	x	x	x	x	x	x	x	x
Steve Fugate	VP, Chief Estimator	20+	x		x	x	x	x	x	x	x	x	x	x	x	x	x	x	x	x			x	x	x	x	x	x	x	x	x	x	x		
Andy Varga	VP, Health & Safety	20+	x		x	x	x	x	x	x	x	x	x	x	x	x	x	x	x	x	x	x	x	x	x	x	x	x	x	x	x	x	x	x	x
Steve Sheridan	Regional Manager	10+	x		x	x		x	x	x	x	x	x	x	x	x	x	x	x		x	x	x	x	x	x	x	x	x		x	x			
Bill Torres	Regional Manager	15+	x	x	x	x	x	x	x	x	x	x	x	x	x	x	x	x	x	x	x	x	x	x	x	x	x	x	x		x	x			
Joe LeClair	Regional Manager	25+		x	x	x	x	x		x	x		x	x	x	x	x	x		x	x	x		x	x	x		x	x	x					
Dan Ngo	Estimator / PM	15+	x	x	x	x		x	x	x	x	x	x	x	x	x	x	x	x	x	x		x	x	x	x	x	x	x	x	x	x	x	x	
Dan Copans	Estimator / PM	25+	x		x	x	x	x	x	x	x	x	x	x	x	x	x	x	x	x	x	x		x	x	x	x	x	x		x	x			
Aaron Drumm	Estimator / PM	5+	x		x	x		x	x	x	x		x	x	x	x	x	x							x	x	x	x	x		x				
Joe Eichler	Estimator / PM	23+	x		x	x		x	x		x	x	x	x	x	x			x		x	x	x	x	x									x	
Keith Knudslien	Gen. Superintendent	25+	x		x	x	x	x	x	x	x	x	x	x	x	x	x	x	x	x	x	x	x	x	x	x	x	x	x	x	x	x	x	x	
Alan Wright	Superintendent	35+	x		x	x		x	x	x	x	x	x	x	x	x	x	x			x	x	x	x	x	x	x	x		x	x				
Bobby Faust	Superintendent	30+	x	x	x	x	x	x		x	x	x	x	x	x	x	x	x	x	x	x	x	x	x	x			x						x	
Fernando Guillin	Superintendent	10+	x	x	x	x	x	x	x	x	x	x	x	x	x	x	x	x	x	x	x			x		x	x	x		x	x				
Horacio Raymundo	Superintendent	25+	x	x	x	x	x	x	x	x	x	x	x	x	x	x	x	x	x		x	x	x	x		x	x	x		x	x				
Jim Hayden	Superintendent	25+	x	x	x	x	x	x		x	x	x	x	x	x	x	x	x	x	x		x			x	x	x	x	x	x	x	x	x		
Michael Zamora	Superintendent	20+	x	x	x	x	x	x	x	x	x	x	x	x	x	x	x	x	x	x	x		x	x		x	x	x		x	x				
Alberto Marquez	Superintendent	20+	x	x	x	x	x	x	x	x	x	x	x	x	x	x	x	x	x	x	x	x	x	x		x	x	x		x	x				
Oscar Reyes	Superintendent	15+	x	x	x	x	x	x	x	x	x	x	x	x	x	x	x	x	x	x	x	x	x	x		x	x	x		x	x				
Federico Macias	Superintendent	15+	x	x	x	x	x	x	x	x	x	x	x	x	x	x	x	x	x	x	x	x	x	x		x	x	x		x	x				
Don Barris	Superintendent	10+	x		x	x	x	x		x	x	x	x	x	x	x			x	x	x	x	x				x		x						
Nick Chavez	Superintendent	10+	x	x	x	x	x	x	x	x	x	x	x	x	x	x	x	x	x	x	x	x	x			x	x	x		x	x				
Chris Hannon	Salvage Mgr. / HSO	20+	x	x	x	x		x	x		x	x	x	x	x	x	x	x			x	x	x	x	x	x			x	x	x	x			

5 Experience



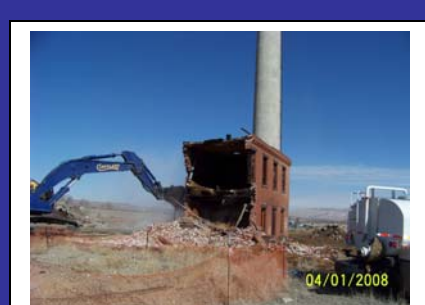
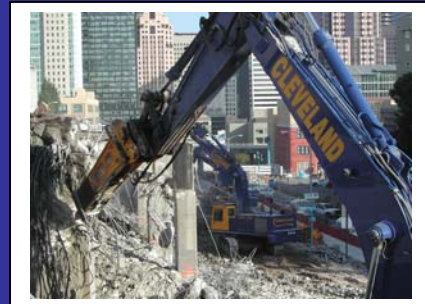
5 Experience

Few other organizations have the history and experience of Cleveland Wrecking Company. Since 1910 we have invented and re-invented the demolition business to encompass new services and technologies to meet the needs of a changing world. We have developed a wide range of comprehensive, "turn-key" solutions to meet the challenges of every project. Our unparalleled range of services includes all types of demolition, dismantling, asbestos abatement, lead abatement, nuclear decommissioning, salvage recovery, decontamination services, site restoration and more. We have the experience and resources you can depend on for every detail of your project.

Of course, a history of successful achievements is the best way to anticipate a contractor's ability for future performance. When it comes to a history of successfully completed projects, no other contractor can compare the range and breadth of their achievements with those of Cleveland Wrecking Company.

We have a huge portfolio of successfully completed, landmark projects. Among our notable projects, Cleveland Wrecking Company has demolished: The Seattle Kingdome, the Kowloon Walled City in Hong Kong, the Royal Palm Resort in Guam, the Anaconda Smelter Complex, the New York World's Fair site, the San Francisco World's Fair site, the Pruitt-Igoe high rise housing project in St. Louis, the 37 story IBM Building in New York, the 20th Century-Fox Studios lot for Century City in Los Angeles, Gimbel's Department Store in Philadelphia, the Metropolitan Opera House in New York, the La Salle Hotel in Chicago, the Oregonian Building in Portland, the Birks Building in Vancouver, Canada, and many others, too numerous to mention.

Included herewith is an experience matrix which presents a partial listing of our more notable plant projects, including power facilities performed during the last 15 years.



**Power,
Chemical,
Refinery, and
Nuclear Plant
Experience**

EXPERIENCE CATEGORIES

1. Lead and/or Asbestos Abatement
2. Equipment Decontamination
3. Building Decontamination (Regulated Materials & Surfaces)
4. Radioactive Decontamination
5. Demolition and Salvage
6. Tank and/or Piping Removals

Project Site	Client	\$ Value	1	2	3	4	5	6
Asarco: 2009 Cleaning & Demolition Program East Helena, Montana	Asarco, LLC East Helena, Montana	\$1,900,000.00	■		■		■	
DSM Columns & Copeland Plant Augusta, Georgia	DSM Life Sciences Augusta Service Company Augusta, Georgia	\$480,000.00	■				■	
BP Greybull Facility Closure Greybull, Wyoming	BP - Atlantic Richfield North America Inc Warrenville, Illinois	\$2,950,000.00	■				■	
Nuclear Plant Closure Gaffney, South Carolina	Duke Energy Charlotte, North Carolina	\$7,600,000.00		■	■	■	■	■
Silvergate Power Plant Decommissioning San Diego, CA	Sempra - SDG&E San Diego, CA	\$8,100,000.00	■	■	■		■	■
Koch Plant Decommissioning and Demo Dearborn, MI	URS Corporation Farmington Hill, MI	\$5,000,000.00	■	■	■		■	■
Refinery Demolition Texas City, TX	Valero Energy Corporation San Antonio, TX	\$148,000.00	■				■	
Refinery Demolition Pascagoula, MS	Chevron Products Company Pascagoula, MS	\$299,000.00	■				■	
Demo of Various Concrete Structures Fountain Valley, CA	J.F. Shea Construction Co. Fountain Valley, CA	\$891,000.00					■	
Gas Plant Demolition Markham, TX	Marathon Petroleum Company Tulsa, Ok	\$375,000.00	■	■	■	■	■	■
Refinery Dismantlement Colon, Panama	Chevron EMC Colon, Panama	\$473,000.00					■	■
Refinery Site Closure Duncan, OK	Conoco Phillips Duncan, OK	\$20,000,000.00	■	■	■		■	■
DSM Copolymer - Addis Plant Addis, Louisiana	DSM Copolymer DSM Elastomers Americas Baton Rouge, Louisiana	\$3,000,000.00	■				■	
Electrol Plant Demolition Hamilton, Mississippi	Kerr McGee Hamilton, Mississippi	\$690,000.00		■			■	
The Mound Radiological Deco/Demo Miamisburg, OH	BXTW Miamisburg, OH	\$2,600,000.00	■	■	■	■	■	■
Generating Plant Closure Jacksonville, Florida	Jacksonville Electric Authority Jacksonville, Florida	\$19,000,000.00	■		■		■	■
San Onofre Demolition Services San Clemente, CA	Southern California Edison San Clemente, CA	\$850,000.00			■		■	
Dismantlement of UCC Plant Ponce, Puerto Rico	Union Carbide South Charleston, WV	\$15,000,000.00	■	■	■	■	■	■
Removal of Nuclear Reactor Mayaguez, Puerto Rico	Bechtel National Oak Ridge, Tenn	\$1,000,000.00	■	■	■	■	■	
Removal of Nuclear Reactor Shippingsport, PA	M. Ferguson, Inc. Cleveland, Ohio	\$8,000,000.00		■	■	■	■	
Demo of General Atomics Plant San Diego, CA	Bechtel National Oak Ridge, Tenn	\$2,000,000.00	■	■	■	■	■	

**Power,
Chemical,
Refinery, and
Nuclear Plant
Experience**

EXPERIENCE CATEGORIES

1. Lead and/or Asbestos Abatement
2. Equipment Decontamination
3. Building Decontamination (Regulated Materials & Surfaces)
4. Radioactive Decontamination
5. Demolition and Salvage
6. Tank and/or Piping Removals

Project Site	Client	\$ Value	1	2	3	4	5	6
Filtrol Decontamination & Demolition Vernon, CA	Aman Environmental Covina, CA	\$9,000,000.00	■	■	■	■	■	■
Demo of Superfund Plant Fernald, Ohio	Caddell Construction Co Montgomery, Alabama	\$2,000,000.00	■	■	■	■	■	
Demo Reynolds Aluminum Plant Oak Ridge, Tenn	Bechtel Environmental Oak Ridge, Tenn	\$8,000,000.00	■	■	■		■	■
Demo of Smelter / Plant Denver, Co	ARCO Denver, Co	\$12,000,000.00	■	■	■	■	■	
Demo Reduction Closed Pilot Plant Huntington, WV	Huntington Alloys, Inc. Huntington, WV	\$7,000,000.00	■	■	■	■	■	
Demo of Coal Fire Steam Plant Sherman Creek Generating Station	Consolidated Edison New York, NY	\$8,000,000.00	■	■	■		■	■
Demo of Styrene Facility Belpre, Ohio	Shell Chemical Belpre, OH	\$5,600,000.00	■	■	■		■	
Demo of PMC Chemical Refinery Santa Fe Springs, CA	McLaren Hart Environ. Irvine, CA	\$2,000,000.00	■	■	■		■	■
Demo of Lever Bros Proc. Facility Commerce, CA	Santa Fe Railroad San Bernardino, CA	\$2,600,000.00	■	■	■		■	
Select Demo Active Generating St. Burlington, New Jersey	PSE&G Company Newark, New Jersey	\$500,000.00	■	■	■	■	■	■
Renovation / Retro Generator Bldg. Raverswood Site, New York	Consolidated Edison New York, NY	\$900,000.00	■	■	■		■	
Demo of Power Plant Kips Bay, New York	Consolidated Edison New York, NY	\$1,000,000.00	■	■	■		■	
Demo of Power Plant Cedar Falls, Iowa	The Board of Regents Cedar Falls, IO	\$885,000.00	■	■	■		■	
Demo Spruance Plant Wilmington, DE	E.I. DuPont de Nemours Wilmington, DE	\$300,000.00	■	■	■		■	
Demo of Building 56 Plant Huntington, WV	BASF Corporation Huntington, WV	\$2,600,000.00	■	■	■		■	
Demolition of Stations A&B San Diego Gas & Electric, CA	AECI Covina, CA	\$500,000.00	■	■	■		■	■
Demo of Pulp Mill Fort James Paper Mill, WI	C Meyers, Inc. Oshkosh, WI	\$512,000.00	■	■	■		■	
Demo General Dynamics Facility San Diego, CA	ICF Kaiser Oakland, CA	\$4,400,000.00	■	■	■		■	■
Demo of Detergent Manuf. Plant Sacramento, CA	Proctor & Gamble Sacramento, CA	\$750,000.00	■	■	■		■	■
Demo of Digester & Proc. Facility Los Angeles, CA	Dillingham-Wilson Los Angeles, CA	\$1,200,000.00	■	■	■		■	
Demo of Westinghouse Facility New York, NY	Tinicum Properties Assoc. New York, NY	\$1,400,000.00	■	■	■		■	
Petroleum Processing Unit Demo Greenville, SC	Amoco Performance Prod. Greenville, SC	\$130,000.00		■			■	■
Semi-Works Unit Demolition Marietta, OH	Amoco Performance Prod. Greenville, SC	\$400,000.00		■	■		■	
Ethylene Unit/Plant Removals Watson Refinery, CA	ARCO Chemical Houston, TX	\$160,000.00		■			■	
Selective Demolition/Plant Piping Philadelphia, PA	Atlantic Richfield Company Philadelphia, PA	\$130,000.00	■	■			■	■
BP Refinery Dismantlement Svcs Marcos Hook, PA	BP Oil Company Cleveland, Ohio	\$200,000.00	■	■	■		■	
Champlin Refinery Removals Enid, OH	Champlin Petroleum Co Fort Worth, TX	\$310,000.00	■	■	■		■	
Chevron Additives Plant Demo	Chevron Chemical Co	\$344,000.00	■	■	■		■	■

**Power,
Chemical,
Refinery, and
Nuclear Plant
Experience**

EXPERIENCE CATEGORIES

1. Lead and/or Asbestos Abatement
2. Equipment Decontamination
3. Building Decontamination (Regulated Materials & Surfaces)
4. Radioactive Decontamination
5. Demolition and Salvage
6. Tank and/or Piping Removals

Project Site	Client	\$ Value	1	2	3	4	5	6
Los Angeles, CA	Los Angeles, CA							
Chevron Refinery Recov Unit Demo El Segundo, CA	Fluor Daniel Irvine, CA	\$830,000.00	■	■	■		■	
TCC Unit Removal West Lake, LA	Conoco, Inc. Houston, TX	\$223,000.00	■	■	■		■	
Bayonne Terminal Removal Louisiana	Exxon, USA Houston, TX	\$1,076,000.00	■	■	■		■	
Various Refinery Removals Canada	Imperial Oil (Exxon) Sarina, Ontario	\$2,400,000.00	■	■	■		■	
Various Removals Mobile Refineries Nationwide, USA	Mobile Oil Company Paulsboro, PA	\$334,000.00	■	■	■		■	
HydroGenerating Plant Removals Borger / Sweeny, TX	Phillips Petroleum Co Bartlesville, OK	\$128,000.00	■	■	■		■	
TCC Unit Removal Carson, CA	Shell Oil Company Carson, CA	\$557,000.00	■	■			■	
St. Boniface Refinery Demolition Winnipeg, Canada	Shell Oil Company Transcona, Manitoba	\$2,000,000.00	■	■	■		■	
Research Bldg and Stack Removals Ohio and Illinois	Shell Oil Company Woodriver, IL	\$420,000.00	■	■	■		■	
Petrochemical Unit Removals Marcus Hook, PA	Sun Market / Refining Co Marcus Hook, PA	\$710,000.00	■	■	■		■	■
Wilmington Refinery Removals Wilmington, CA	Texaco, Inc. Wilmington, CA	\$320,000.00	■	■	■		■	■
Unocal Refinery Removals Wilmington, CA	Fluor Daniel, Inc. Irvine, CA	\$359,000.00	■	■	■		■	■
B-6 Plant Demolition Burbank, CA	Lockheed Burbank, CA	\$2,700,000.00	■	■	■		■	

6 References



6 References

Cleveland Wrecking Company is an established leader in the demolition and environmental construction industries. We are proud of the earned reputation we have as an efficient and professional contractor. We invite you contact any of the individuals listed below to inquire about our past project performance.

Mr. Gerry Brown
Bay Bridge West Approach
Tutor Saliba Corporation
(818) 362-8391

Ms. Beverly Chin
General Services Administration
Junipero Serra State Office Bldg.
(415) 522-3141

Mr. Alejandro De Jesus
Chevron EMC - Panama
Facility Demolition
(507) 433-8260

Mr. Bob Neilson
Glenn Springs Holdings, Inc.
Chlor Alkali Chemical Plant
(859) 533-2575

Mr. Vince Mattione
Pfizer, Inc.
Pharmaceutical Bldg. Removals
(816) 246-2571

Mr. Kenneth Rice
Duke Energy
Nuclear Station Demolition
(980) 373-4687

Mr. Frank Pazstor
McCarthy Brothers Construction
Hollywood / Highland Highrise Demo
(949) 854-8383

Mr. Tim Hanson
Manson Construction
Pier T Dredge
(562) 432-6918

Mr. Scott Burke
Boeing
SLC-6 Platform Demolition
(805) 606-6340

Mr. Ken Rowlands
San Diego Gas & Electric
Silver Gate Power Plant
(714) 456-2441

Mr. Mark McDaniel
El Paso Gas
(719) 520-4427

Mr. Jeremy Golub
Westfield Corporation
(310) 445-6883

Mr. Mark Mickelson
L.A.U.S.D.
Central H.S. #10
(213) 633-8327

Mr. Sam Wehn
TBC, LLC
TBC Demolition / Remediation
(415) 512-1515

